

**MOXA** [www.moxa.com](http://www.moxa.com)

**Basic Settings OK!**

Warning! The changes will take affect until Save/Restart the NPort.

You can Save/Restart NPort now or Save/Restart NPort until all other settings configured.

Back **Save/Restart** Home

- Main Menu
  - Overview
  - Basic Settings
  - Network Settings
  - Serial Settings
    - Port 1
  - Operating Settings
    - Port 1
  - Accessible IP Settings
  - Auto Warning Settings
  - Monitor
    - Change Password
    - Load Factory Default
    - Save/Restart

**MOXA** [www.moxa.com](http://www.moxa.com)

**Network Settings**

4

SNMP Setting

IP Address report

Submit

- Overview
- Basic Settings
- Network Settings
- Serial Settings
- Operating Settings
- Accessible IP Settings
- Auto Warning Settings
- Monitor
  - Change Password
  - Load Factory Default
  - Save/Restart

|                         |                |
|-------------------------|----------------|
| IP address              | 192.168.127.25 |
| Netmask                 | 255.255.255.0  |
| Gateway                 |                |
| IP configuration        | Static         |
| DNS server 1            |                |
| DNS server 2            |                |
| SNMP                    | Enable         |
| Community name          |                |
| Contact                 |                |
| Location                |                |
| Auto report to IP       |                |
| Auto report to UDP port | 4002           |
| Auto report period      | 10 seconds     |

MOXA WWW.MOXA.COM

**Serial Settings**

Port alias

Baud rate: 115200

Data bits: 8

Stop bits: 1

Parity: None

Flow control: None

FIFO:  Enable  Disable

Interface: RS-232

Submit

MOXA WWW.MOXA.COM

**Operating Settings**

Operation mode: TCP Server Mode

Inactivity time: 0 (0 - 65535 ms)

Max connection: 1

Ignore jammed IP:  No  Yes

Allow driver control:  No  Yes

Packing length: 0 (0 - 1024)

Delimiter 1: 0 (Hex)  Enable

Delimiter 2: 0 (Hex)  Enable

Process: Do Nothing (Processed only when Packing length is 0)

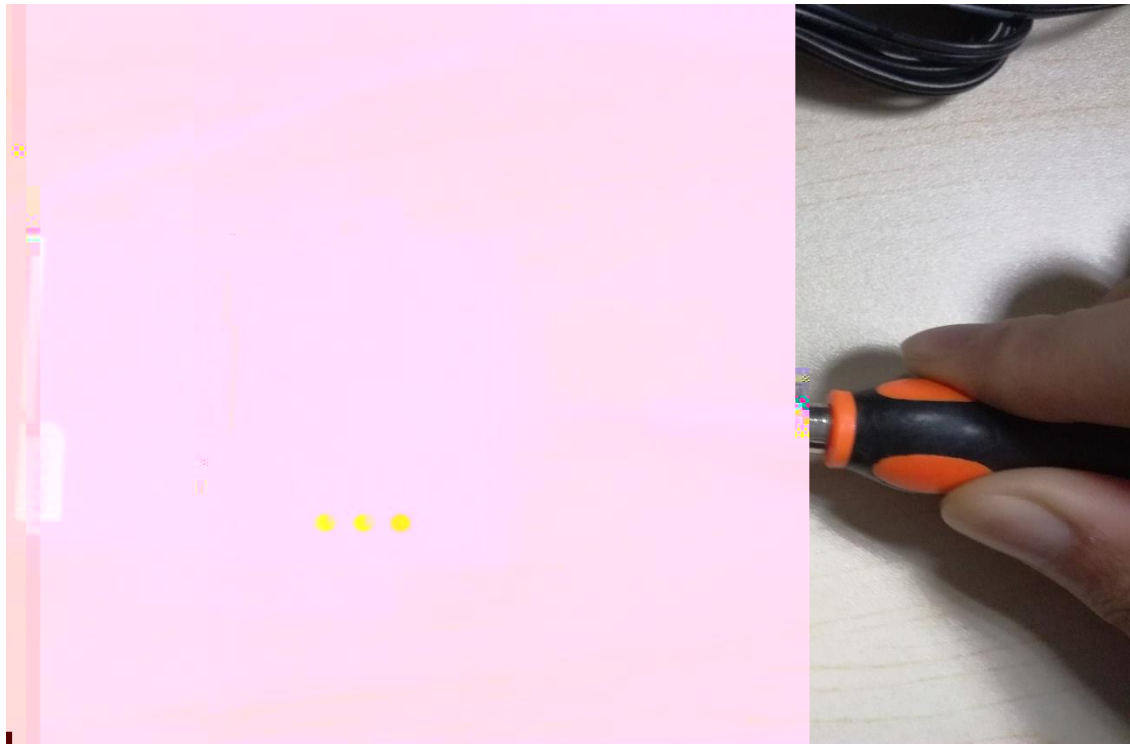
Transmit: 0 (0 - 65535 ms)

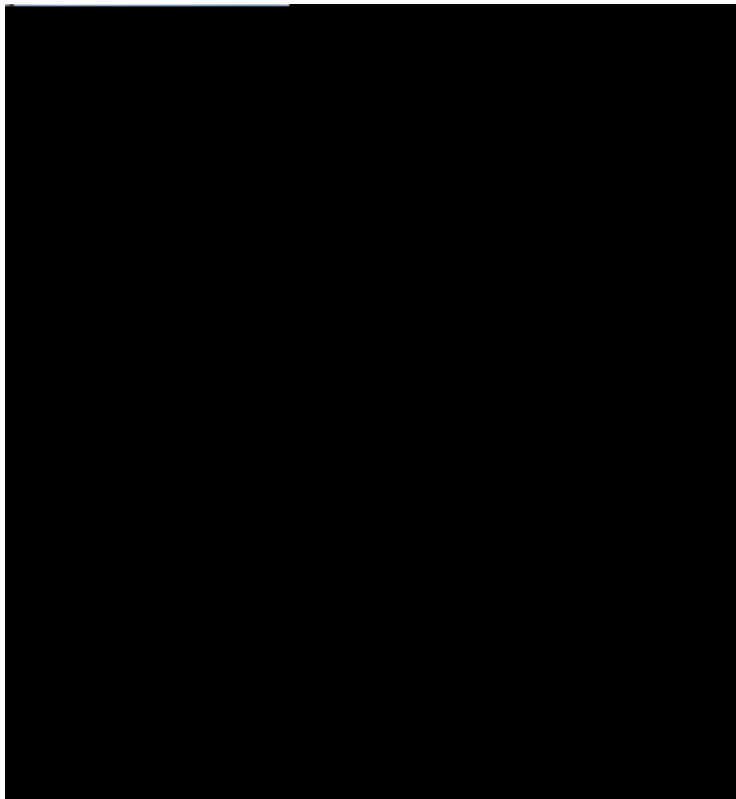
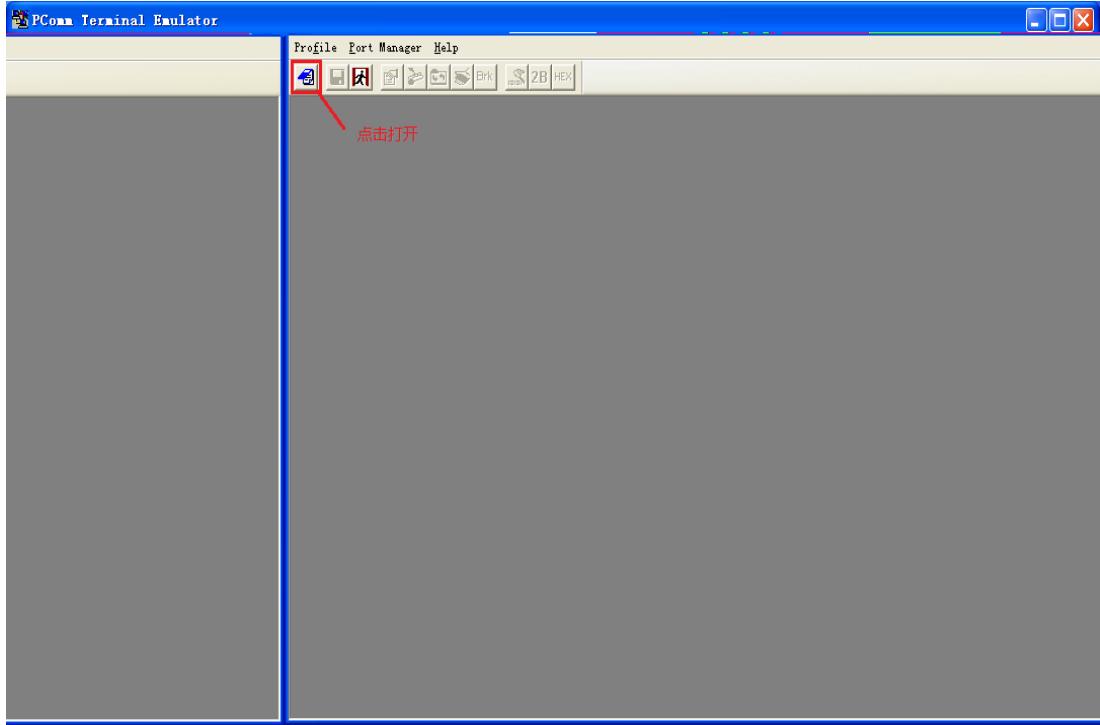
**TCP Server Mode**

Local port: 4001

Bind port: 966

Submit









**RS-232/422/485 Port Pinouts for NPort 5650**

| Pin | RS-232 | RS-422<br>4-wire RS-485 | 2-wire<br>RS-485 |
|-----|--------|-------------------------|------------------|
| 1   | DSR    | ---                     | ---              |
| 2   | RTS    | TxD+                    | ---              |
| 3   | GND    | GND                     | GND              |
| 4   | TxD-   | TxD-                    | ---              |
| 5   | RxD    | RxD+                    | Data+            |
| 6   | DCD    | RxD-                    | Data-            |
| 7   | ---    | CTS                     | ---              |
| 8   | ---    | DTR                     | ---              |

