

# IGMP Snooping

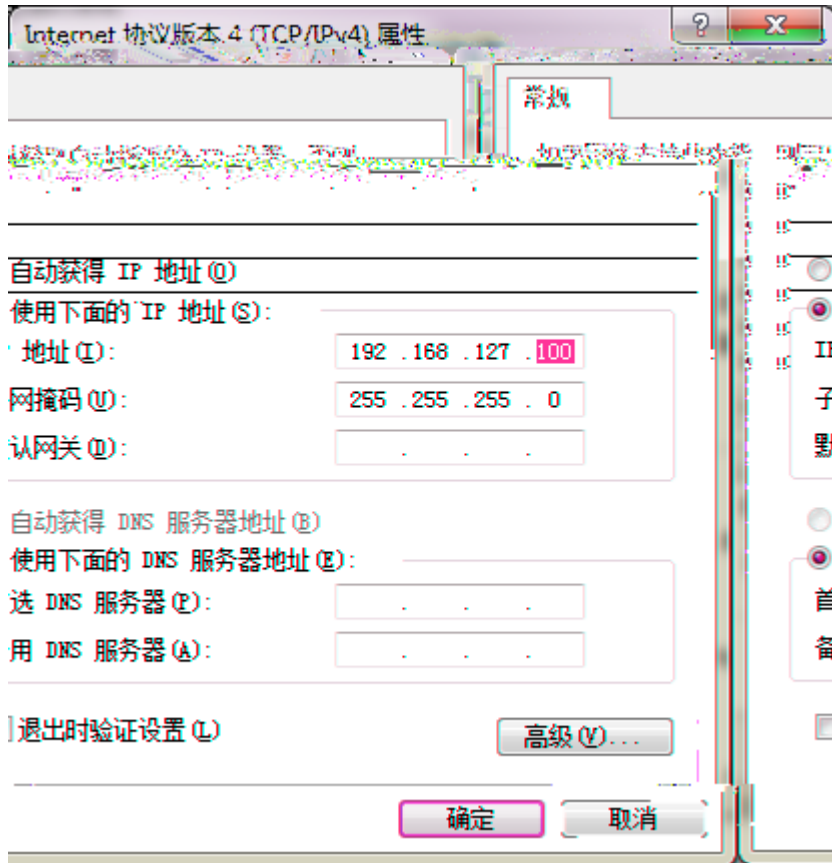
	.....	2
	.....	2
1	.....	2
2	.....	3
3	IGMP Snooping.....	4
IGMP Snooping	.....	5

192.168.127.xxx

PC

IP

192.168.127.0



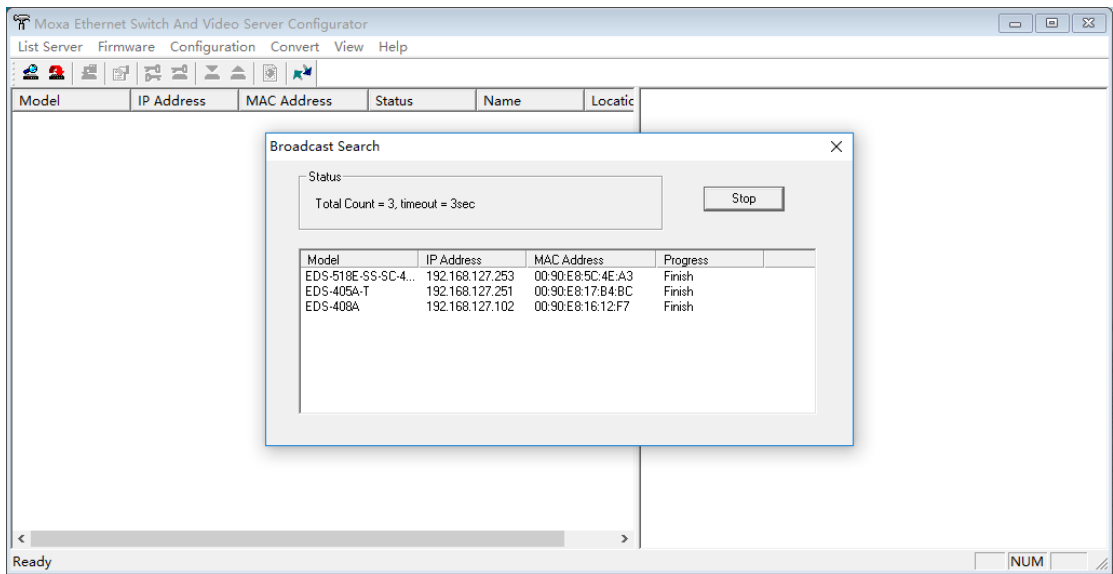
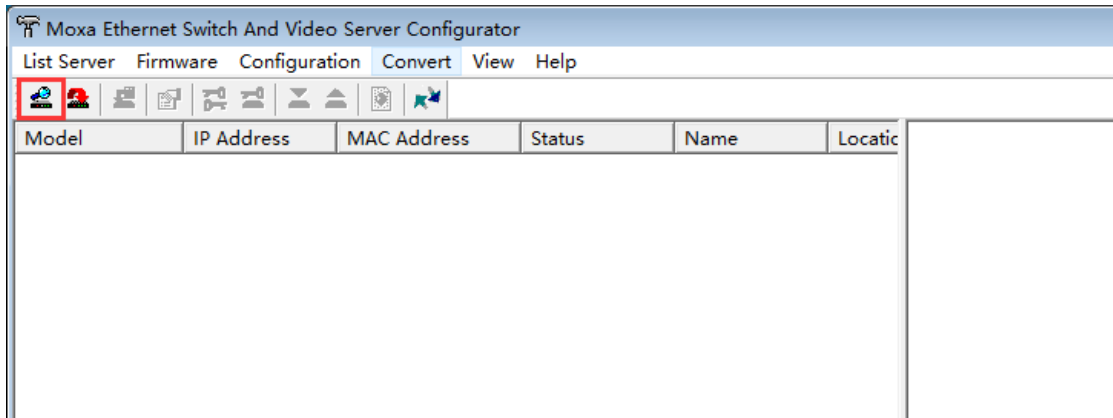
1

Search

edscfgui

<https://www.moxa.com/drivers/EDS/utility/V5.3/edscfgui.exe>

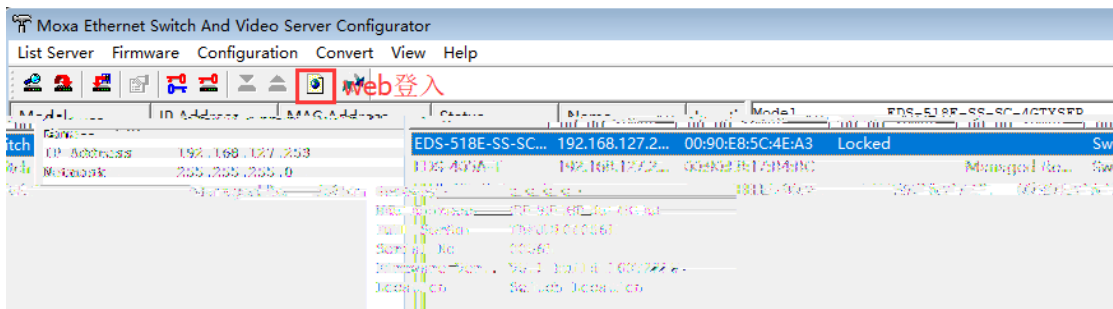
edscfgui



2

edscfgui

web

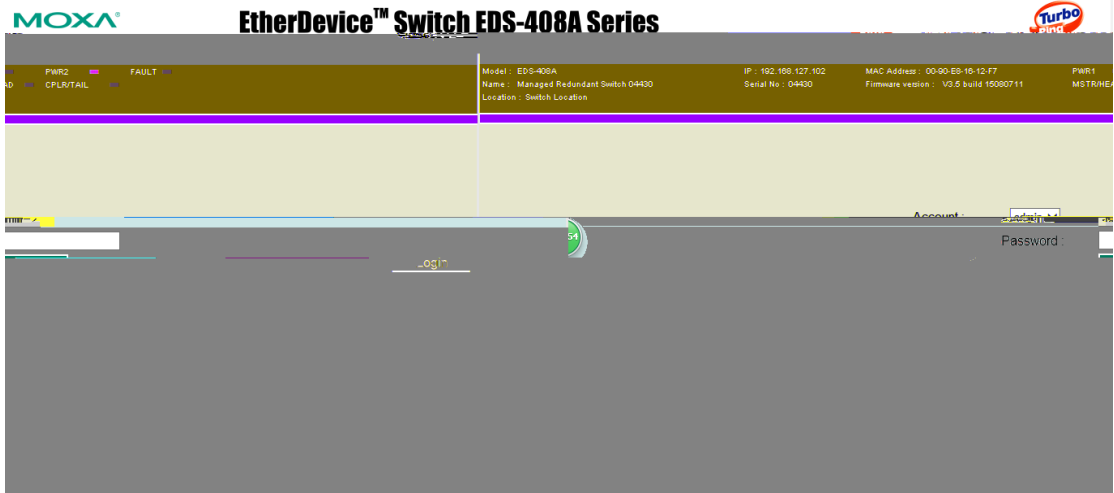


Web

IP

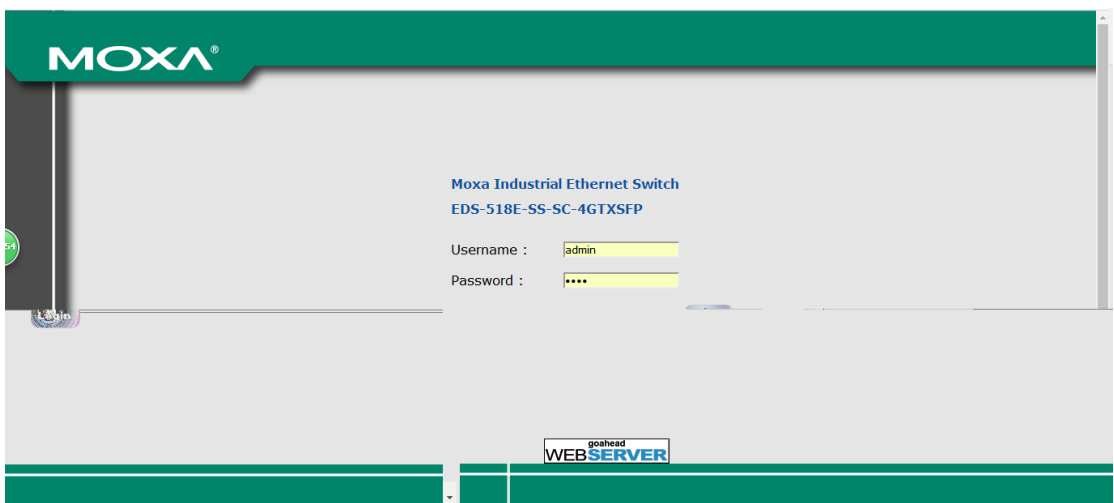
admin

moxa  
EDS-400A



EDS-500E

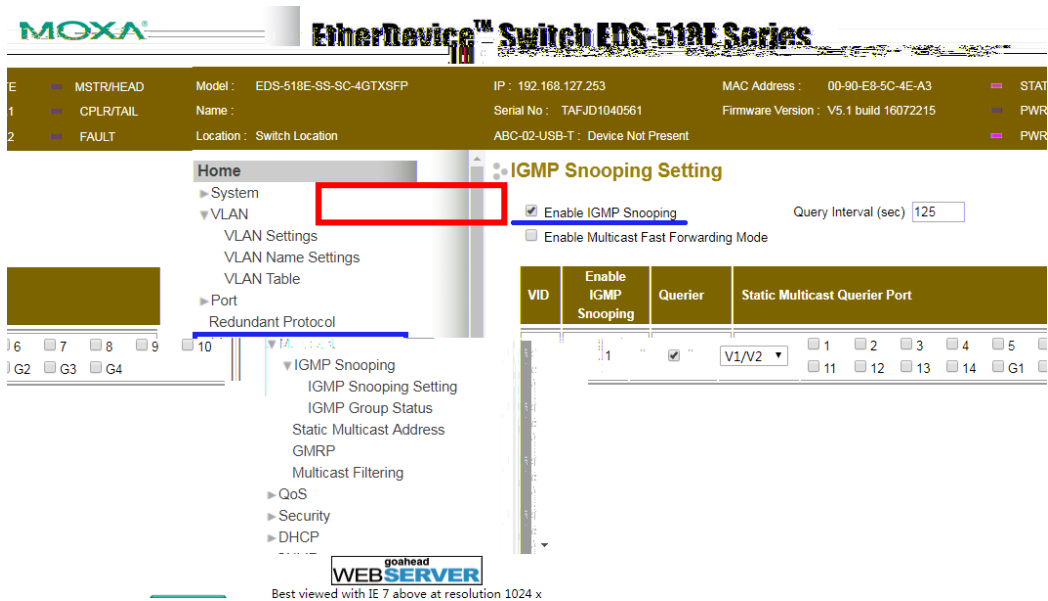
moxa



### 3 IGMP Snooping

IGMP Snooping Setting

Enable IGMP Snooping



# IGMP Snooping

IGMP

Snooping

IGMP Table

The screenshot displays a network management interface with a sidebar menu on the left and a main content area. The sidebar menu includes options like 'IGMP Snooping Settings', 'IGMP Table', and 'Static Multicast MAC'. The main content area is titled 'Current Active IGMP Groups' and contains a table with the following data:

VID	Auto Learned Multicast	Static Multicast	Querier Connected	Act as Querier	IP	Active I
1			Yes	234.5.6.5 239.255.255.250	01-00-5E-05-06-053 01-00-5E-7F-FF-FA3	

The table row is highlighted with a red border. At the bottom right of the interface, there is a logo for 'goahead WEB SERVER' and the text 'Best Viewed With IE7 Above screen resolution 1024 x 768'.