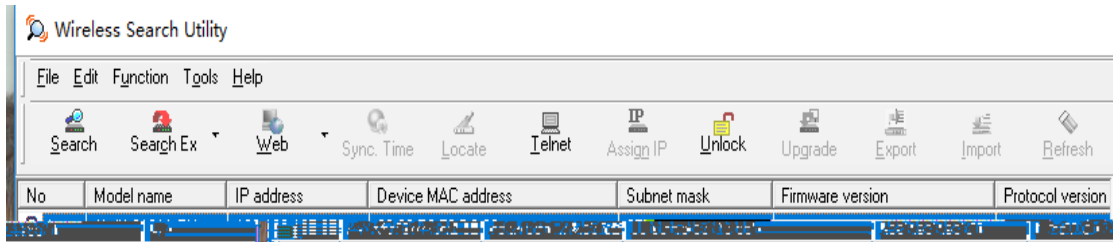
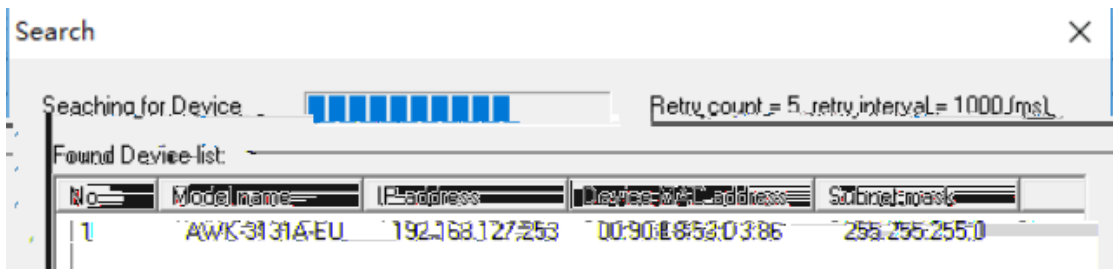
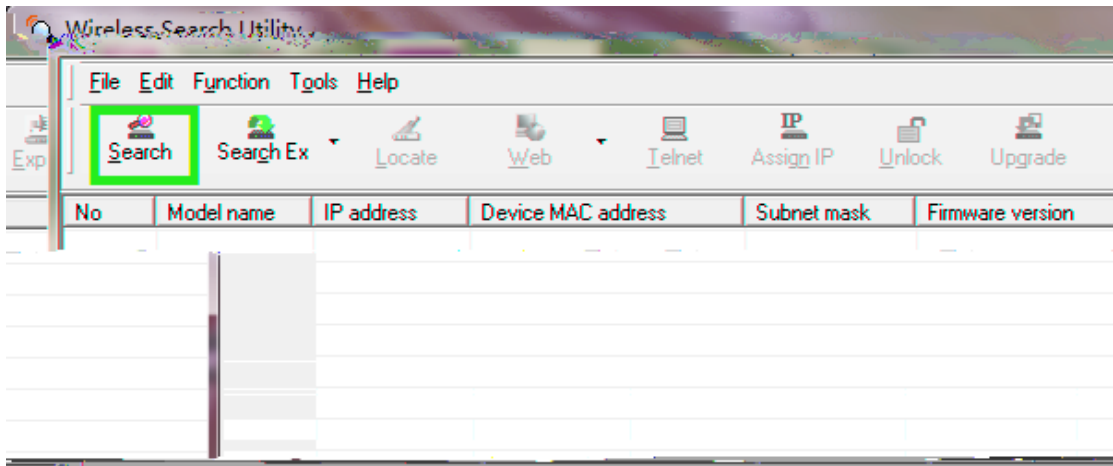
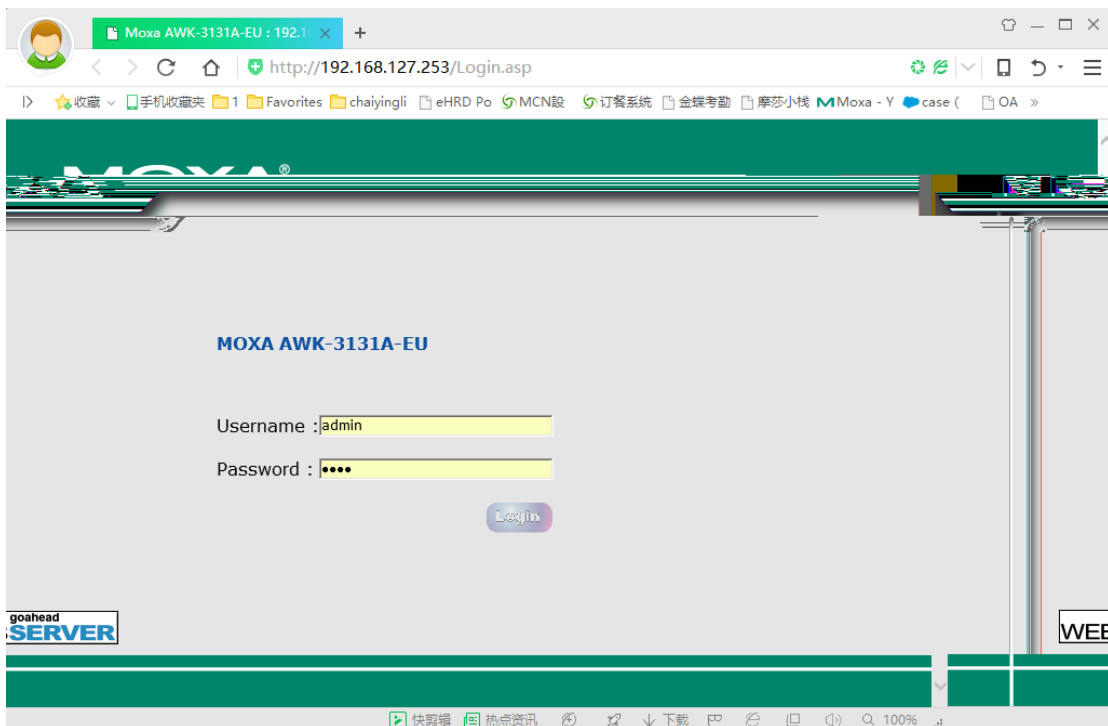
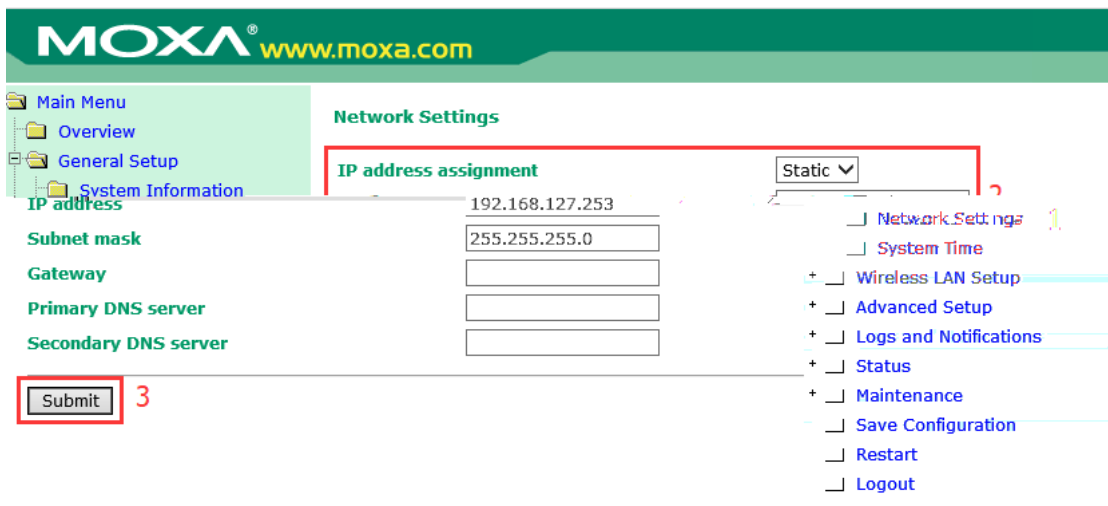


AWK-3131A

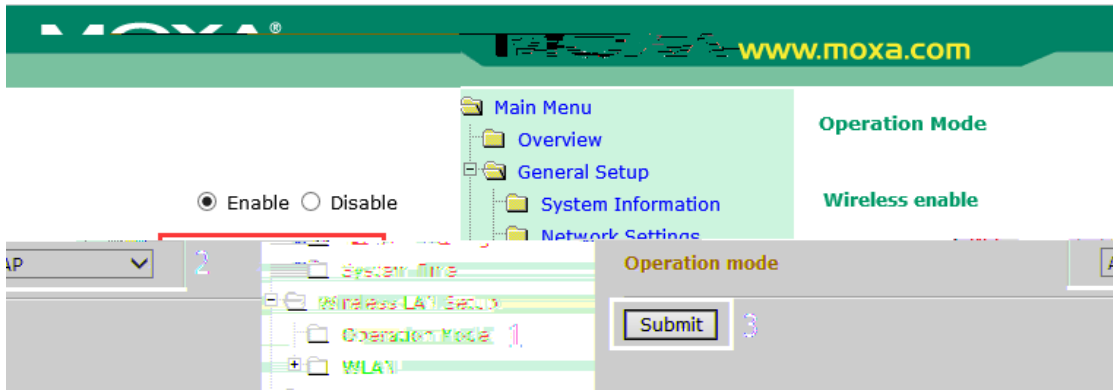




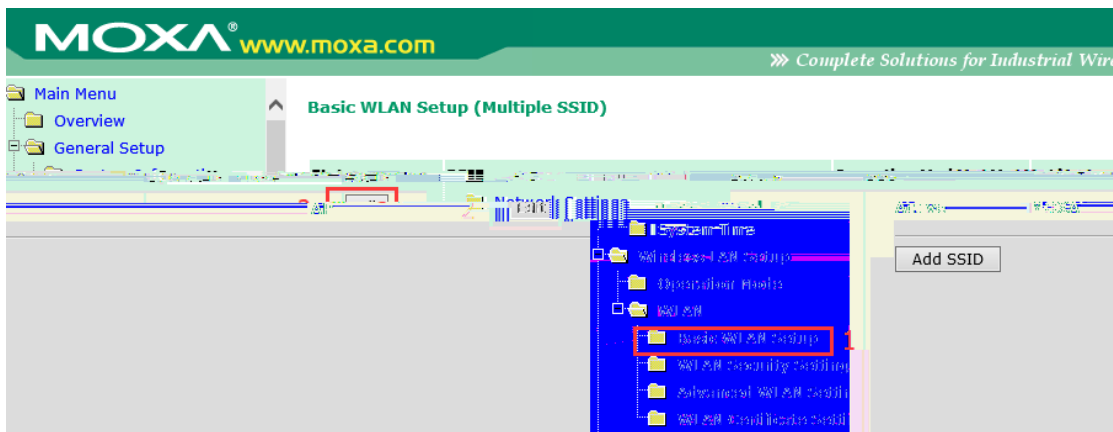
" " " "



" " " " " "

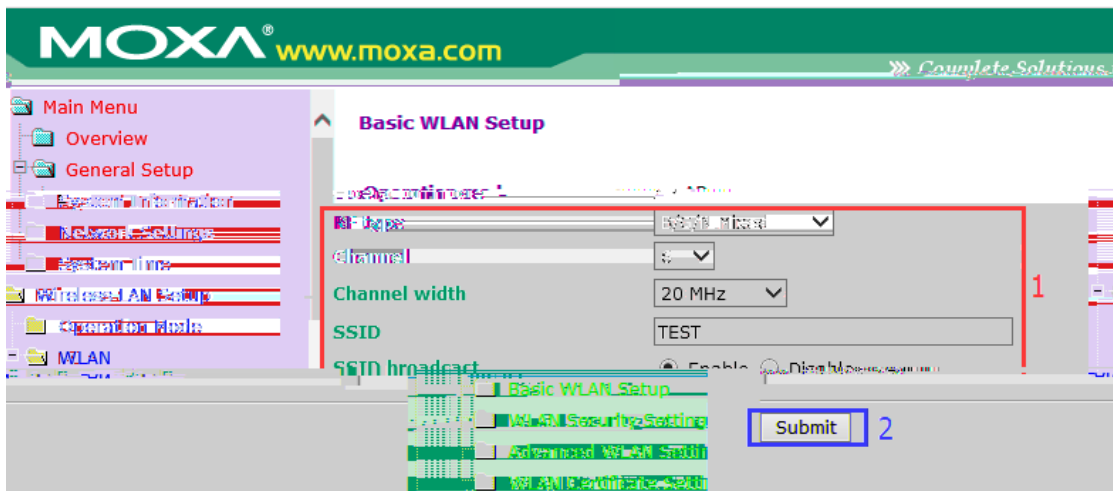


" " " "



" "

" "



MOXA® www.moxa.com » Complete Solutions for Industrial Wireless Network

Main Menu

- Overview
- General Setup
- Wireless LAN Setup
 - Operation Mode
 - WLAN
 - Basic WLAN Setup
 - WLAN Security Settings 1
 - Advanced WLAN Settings
 - WLAN Certificate Settings
- Advanced Setup
- Logs and Notifications
- Status

WLAN Security Settings (Multiple SSID)

Status	SSID	Operation Mode	Security Mode	Action
Active	MOXA	AP	OPEN	Edit 2

MOXA® www.moxa.com » Complete Solutions for Industrial Wireless Network

Main Menu

- Overview
- General Setup
- Wireless LAN Setup
 - Operation Mode
 - WLAN
 - Basic WLAN Setup
 - WLAN Security Settings
 - Advanced WLAN Settings
 - WLAN Certificate Settings
 - Advanced Setup
 - Logs and Notifications
 - Status

WLAN Security Settings

SSID: MOXA

Security mode: WPA2

WPA type: Personal

Encryption method: AES

EAPOL version: 1

Passphrase:

Key renewal: 3600 (60~86400 seconds)

Submit 2

MOXA® www.moxa.com » Complete Solutions for Industrial Wireless Network

*** Please restart or click here to activate configuration changes. ***

Main Menu

- Overview
- Wireless LAN Setup
 - WLAN Security Settings (Updated)

MOXA® www.moxa.com » Complete Solutions for Industrial Wireless Network

*** Please restart or click here to activate configuration changes. ***

Restart

!!! Warning !!!

Click "Restart" to discard configuration changes and restart the system.

Click "Save and Restart" to save configuration changes and restart the system.

Restart Save and Restart

- Main Menu
 - Overview
 - General Setup
 - Wireless LAN Setup
 - Operation Mode
 - WLAN
 - Basic WLAN Setup
 - WLAN Security Settings
 - Advanced WLAN Settings

Overview

This screen displays current active settings

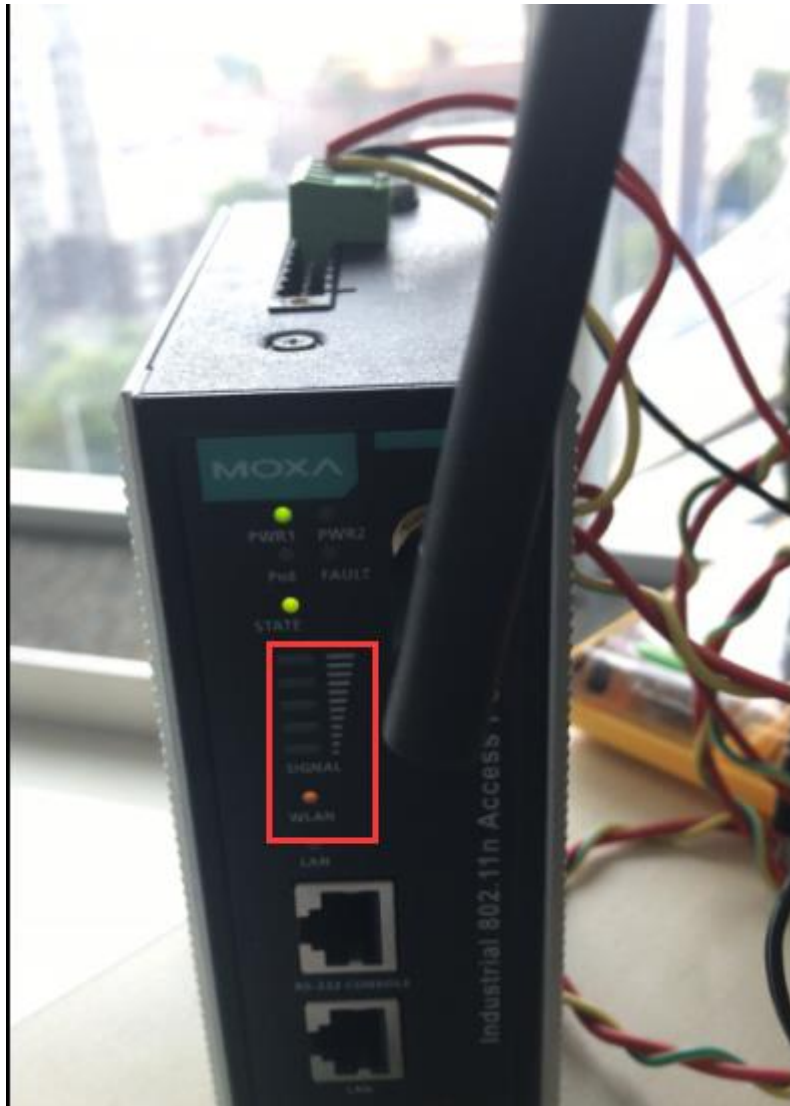
System Information

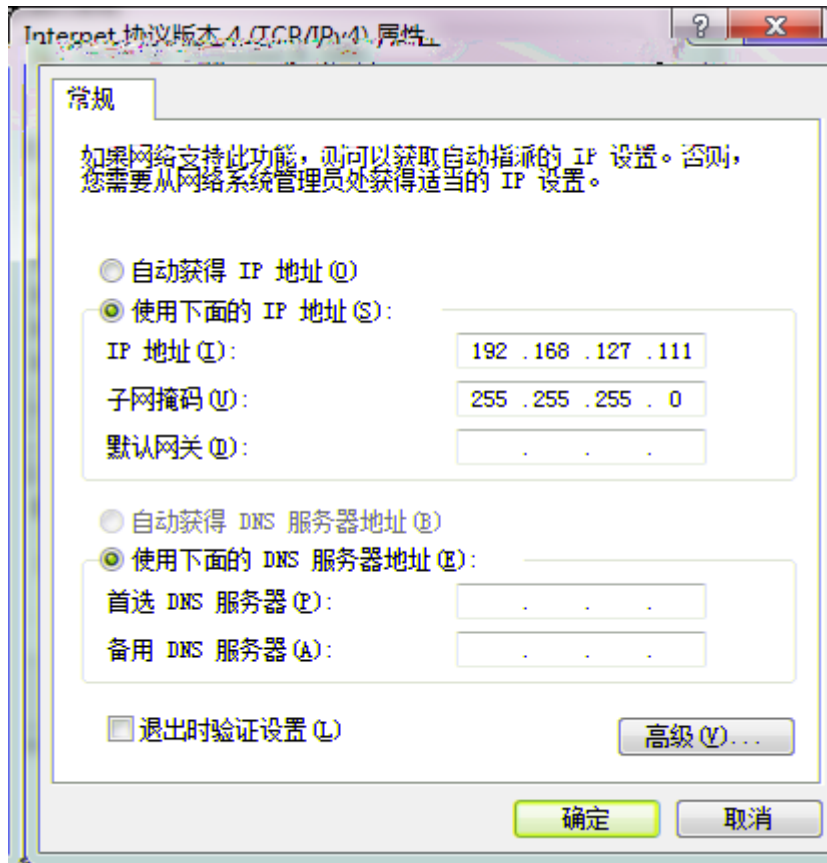
Model name	AWK-3131A-EU
Device name	AWK-3131A_9726
Serial No.	9726
System up time	0 days 00h:11m:10s
Firmware version	1.5 Build 17041601

MAC address	00:00:19:03:03:06
IP address	192.168.127.253
Subnet mask	255.255.255.0
Region	EU
Mode	AP
Channel	6
RF type	B/G/N Mixed
Channel width	N/A
SSID	TEST

- System Information
- Device Information
- Device MAC address
- IP address
- Subnet mask
- Gateway
- 802.11 Information
- Country code
- Operation mode
- Channel
- RF type
- Channel width
- SSID







```
命令提示符
C:\Users\Kevin_Chai.MCN>ping 192.168.127.253

正在 Ping 192.168.127.253 具有 32 字节的数据:
来自 192.168.127.253 的回复: 字节=32 时间=7ms TTL=64
来自 192.168.127.253 的回复: 字节=32 时间=1ms TTL=64
来自 192.168.127.253 的回复: 字节=32 时间=5ms TTL=64
来自 192.168.127.253 的回复: 字节=32 时间=1ms TTL=64

192.168.127.253 的 Ping 统计信息:
    数据包: 已发送 = 4, 已接收 = 4, 丢失 = 0 (0% 丢失),
    往返行程的估计时间 (以毫秒为单位):
        最短 = 1ms, 最长 = 7ms, 平均 = 3ms

C:\Users\Kevin_Chai.MCN>ping 192.168.127.253

正在 Ping 192.168.127.253 具有 32 字节的数据:
来自 192.168.127.253 的回复: 字节=32 时间=3ms TTL=64
来自 192.168.127.253 的回复: 字节=32 时间=3ms TTL=64
来自 192.168.127.253 的回复: 字节=32 时间=2ms TTL=64
来自 192.168.127.253 的回复: 字节=32 时间=5ms TTL=64

192.168.127.253 的 Ping 统计信息:
    数据包: 已发送 = 4, 已接收 = 4, 丢失 = 0 (0% 丢失),
    往返行程的估计时间 (以毫秒为单位):
        最短 = 2ms, 最长 = 5ms, 平均 = 3ms

C:\Users\Kevin_Chai.MCN>
```

